

G8

Portable gas detector, geolocated personal safety alarm (DATI), walkie-talkie

Detection of up to 5 gases

ATEX-certified, 4G & GPS

DATI/PTI



Technical specifications

Basic functions for the G8

- Fall and no-motion detection: Three-axis accelerometer and gyroscope, configurable sensitivity, configurable no-motion delay
- SOS alert: Dedicated latch to signal an emergency
- Silent alert: Configurable button for discreet alerts
- Safety check-in: Configurable every 5 to 180 minutes or disabled
- Automatic check-in: Activated while driving
- Dimensions: 122 mm × 65 mm × 42 mm / 207 g / IP67

Blackline Live Web App

The cloud-hosted web application enables comprehensive monitoring and configuration: device management, user profiles, real-time alerts, detailed reports, and location tracking.

Ergonomics: 2.13" high-resolution graphic LCD screen; menu accessible via a three-button keypad and side keys; PTT button for two-way voice communication; SOS button with emergency latch; quick access to the integrated flashlight.

Alarm: Audible (95 dB @ 30 cm), LED, and vibration.

Voice calls and messaging: Built-in speaker and microphone; two-way communication.

G8 Wireless: Worldwide 2G/3G/4G LTE cellular connectivity, Bluetooth® 4.2, NFC tag reading, remote updates and configuration via OTA.

Location refresh: Default every 5 minutes; location and sensor data recorded every 10 seconds depending on conditions.

Battery: 1350 mAh Li-ion, rechargeable; 18-hour battery life at 20°C under normal use; 4-hour charging time.

Sensors: Up to 4 sensors simultaneously; detection of up to 5 gases from more than 20 available sensors.

Certifications: SAR, RoHS, CE

Canada & USA: Class I Division 1 Group A, B, C, D T4; Class I Zone 0 AEx ia IIC T4; Ex ia IIC T4 Ga

IECEX, ATEX: Ex ia IIC T4 Ga

Warranty: 2 to 3 years on the device, cartridges, and sensors, extendable up to 5 years depending on terms and conditions.

Product description

The G8 is a portable ATEX Zone 0 device that combines a fully featured lone worker protection system (DATI), a multi-gas detector, and real-time communications. Compared to the G7c, it offers a larger, more readable screen, multi-operator 4G LTE connectivity with automatic network switching, Bluetooth, and enhanced GPS tracking for reliable alerts and accurate location data. A flexible subscription from 1 to 5 years includes alerts, reports, and services tailored to each operational need.

▶ A fully geolocated lone worker protection device (DATI)

The G8 integrates a complete, real-time geolocated DATI to protect lone workers, featuring fall detection, no-motion detection, and an SOS alert button. Data is continuously transmitted to the Blackline Live cloud, enabling real-time monitoring of alerts, location, and event history for rapid response.

▶ Portable gas detection function (up to 5 gases)

In addition to the fully geolocated DATI, the G8 can be equipped with a gas detection function using interchangeable cartridges (single-gas, diffusion multi-gas, or pumped multi-gas). It supports up to 5 gases, with more than 20 sensors available, providing flexible multi-gas monitoring adapted to field requirements.

▶ PTT (Push-To-Talk) button

The G8 also includes PTT (Push-To-Talk) functionality for two-way voice communication between G8 devices. The PTT button allows the device to be used as a walkie-talkie (VoIP), facilitating coordination between users on the same channel. Unlimited range and 99 available channels.

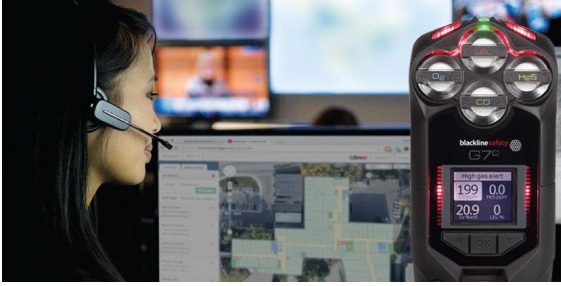


Blackline Live Web Portal

Blackline Live is a secure web-based portal, accessible from desktop and mobile devices, that enables analysis of G8 data to optimize safety and operations. Monitoring is cloud-hosted, with device configuration capabilities and SOC 2 Type 1 compliance.

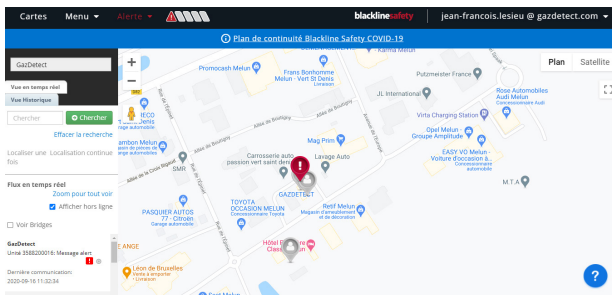
▶ 24/7 Alarm Monitoring Center

Blackline's integrated monitoring center provides continuous 24/7 oversight, with professional emergency response management for field teams. Alarms can also be handled directly by your monitoring partner or your company's internal security team.



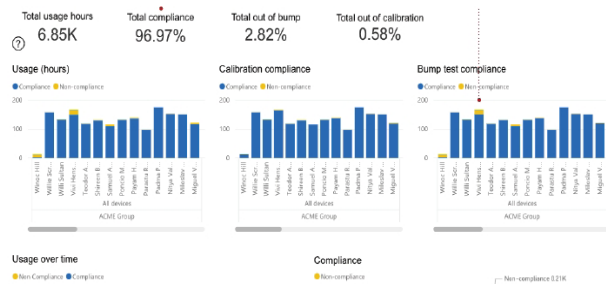
▶ Real-time dashboard

From Blackline Live, the dashboard provides a detailed view of connected G8 devices, enabling incidents to be monitored as they occur and real-time alerts to be issued. Visual and audible alerts include the incident type, status, map-based location, and event history with notes. This allows monitoring personnel to trigger an appropriate emergency response for each situation (SOS button activation, automatic fall detection, no-motion detection, or missed check-in).



▶ Des rapports très détaillés

All parameters, incidents, and information from the G8 fleet are transmitted in real time, or stored and forwarded for areas without connectivity. The data is compiled into detailed reports with tables, charts, and graphs, making analysis and compliance verification easier. Reliability tests and calibrations are logged and provided with downloadable certificates.



Liste des gaz détectés

Gases	Scale	Resolution
Ammoniac (NH ₃)	0- 100 ppm	0.1 ppm
	0- 500 ppm	1 ppm
Carbon monoxide (CO)	0- 500 ppm	1 ppm
	0- 2000 ppm	1 ppm
H ₂ -resistant carbon monoxide (CO-H)	0-500 ppm	1 ppm
Carbon dioxide (CO ₂)	0- 50, 000 ppm	50 ppm
Chlorine (Cl ₂)	0- 20 ppm	0.1 ppm
Chlorine dioxide (ClO ₂)	0- 2 ppm	0.01 ppm
Dual toxic CO/H ₂ S	0- 500 ppm CO	1 ppm CO
	0- 200 ppm H ₂ S	0.1 ppm H ₂ S
Hydrogen (H ₂)	0- 40, 000 ppm	LEL 1 % (400 ppm H ₂)
Hydrogen cyanide (HCN)	0- 30 ppm	0.1 ppm
Hydrogen sulfide (H ₂ S)	0- 100 ppm	0.1 ppm
	0- 500 ppm	0.5 ppm
LEL (Explosive limit) – infrared (LEL-IR)	0-100% LIE	1% LEL
Oxygen (O ₂)	0- 25 % vol	0.1% vol
VOC (PID)	0-4000 ppm	Limite inférieure 0,1 ppm
Sulfur dioxide (SO ₂)	0- 100 ppm	0.1 ppm
Hydrogen fluoride (HF)*	0 - 10 ppm	0.1 ppm
Nitrogen dioxide (NO ₂)	0-50ppm	0,1 ppm
Ozone (O ₃)	0- 1 ppm	0.01 ppm
LEL – Molecular property spectrometer	0-100%	1% LEL

This sensor is not compatible with the pump cartridge.

▶ G8 Accessories



Station



Remote microphone



Location beacon



Multi-unit charger



TagAssign